

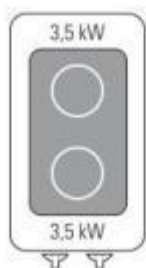
136041

DPIN35E

INDUCTION BOILING TOP (DROP-IN VERSION)



- Electric induction drop-in (35 x 65 x 29.5 cm) with 2 independent cooking zones (3.5 kW each).
- Drop-ins are appliances inserted into worktops of different non-flammable materials. Modules can rest on the worktop or be installed flush the worktop.
- Stainless steel control panel.
- Glass ceramic boiling top (6 mm thick) hermetically sealed to the AISI 304 top for maximum hygiene and ease of cleaning.
- Power regulator 0-6-infinite.
- Increased heating speed compared to other cook top types.
- Heating is enabled only when in contact with the pan, saving energy and reducing overheating.
- Inductor fitted with an air intake filter.
- LED light for detecting pans and signalling operation and errors.
- To optimise efficiency, use high-quality induction boiling pans with a base diameter ranging between 12 cm and 28 cm.



---

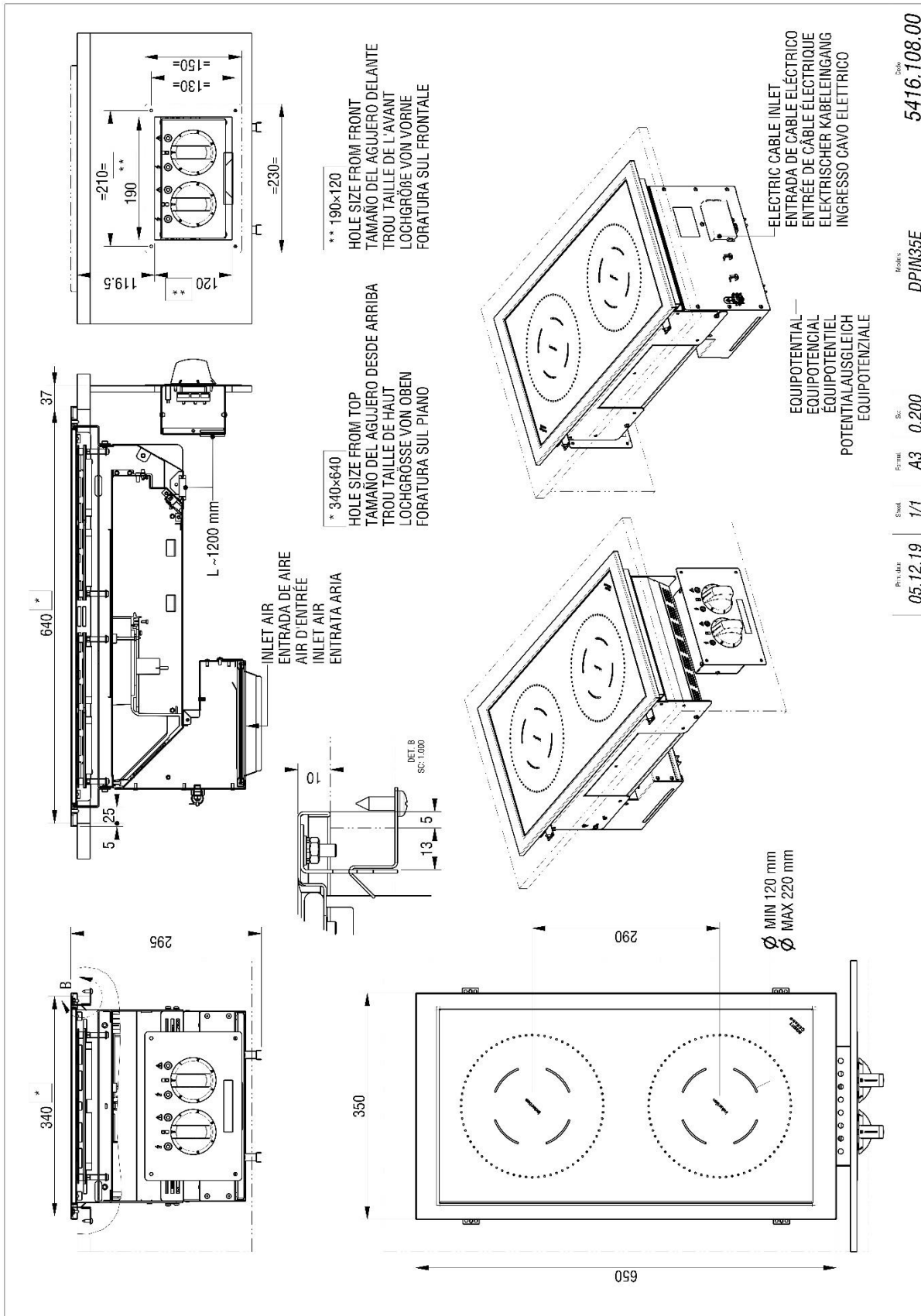
**TECHNICAL DATA**

TOTAL POWER	7 kW	ELECTRIC POWER	7 kW
FREQUENCY	50/60 Hz	VOLTAGE	400 3 ~ V
COOKING ZONE POWER	2X3,5 n°- kW	NUMBER OF COOKING ZONES	n° 2
MINIMUM POWER CABLE CROSS-SECTION	4 x 1,5 n° - mm <sup>2</sup>	ELECTRIC CABLE TYPE	H07 RN-F
MAXIMUM RELATIVE AIR HUMIDITY	30-90 %	WIDTH	35 cm
DEPTH	65 cm	HEIGHT	29,5 cm
PACKAGE WIDTH	81 cm	PACKAGE DEPTH	48 cm
PACKAGE HEIGHT	56 cm	NET WEIGHT	23 kg
GROSS WEIGHT	29,5 kg	VOLUME	0,21 m <sup>3</sup>
HARMONISED CODE	84198180		

---

**ACCESSORIES**

INSTALLATION SCHEMES



Rev. 01/01/00 **DPIN35E** Code **5416.108.00**

Rev. 05.12.19 **A3** 0.200